

VIEW

ISSUE 25 // AUTUMN WINTER 19/20

T W O

ISSUE 25



AUTUMN WINTER 19/20

AUTUMN WINTER 19/20

Publisher// **David R Shah**

Marketing Director// **Giuseppina Sgambati-Shah**

Marketing & Communications// **Livia Shah-Cruger**

View Two is compiled, edited and
designed by **BDA London**

Editor// **Rachel Woodfine**

Art Director// **Rhys Dando**

Copy editors// **Hester Lacey, Robert Uhlig**

Contributors// **Sophie Bramel, James Frid,**

Vittorio Giomo, Gwyneth Holland,

Terrie Isaac, Gary Kaye, Gill Riddell

Researchers// **Mollie O'Beirne, Kayla Pretorius,**

Chloe Tomalin, Justine Lukas

Printers// **Kunst- und Werbedruck**

Publishers

Metropolitan Publishing BV
Saxen Weimarlaan 6
1075 CA Amsterdam
Netherlands

Tel: +31 (0)20 617 7624

info@view-publications.com

www.view-publications.com

Distributors

Distribution Management
Mode...Information GMBH
Pilgerstraße 20

51491 Overath, Germany

Tel: +49 (0)2206 6007 770

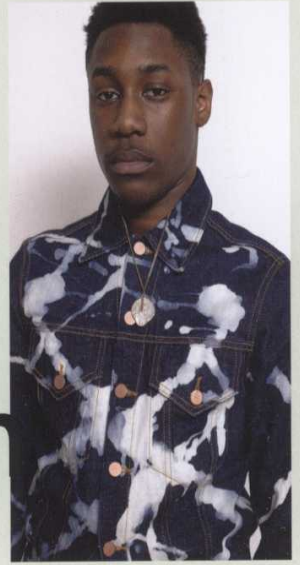
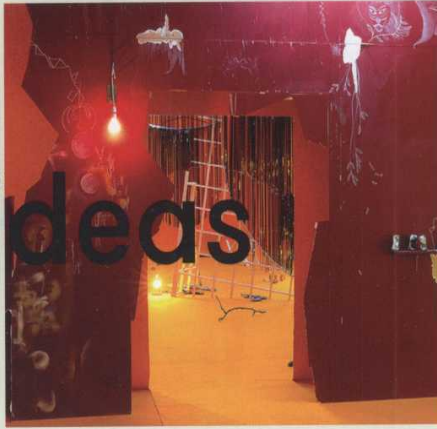
sales@modeinfo.com

www.modeinfo.com

The contents of VIEW TWO magazine are protected by the copyright in all countries that are signatories to the Berne convention. Nothing may be reproduced without the prior consent of the publishers

1. Big ideas

17-37



2. Denim

40-96

3. Casual

98-139



4. Athleisure

142-161



5. Active

164-197



6. Performance

200-216

7. Forecast

226-237

